

\$1,558,000 - 172 Puaehu St, Wailuku

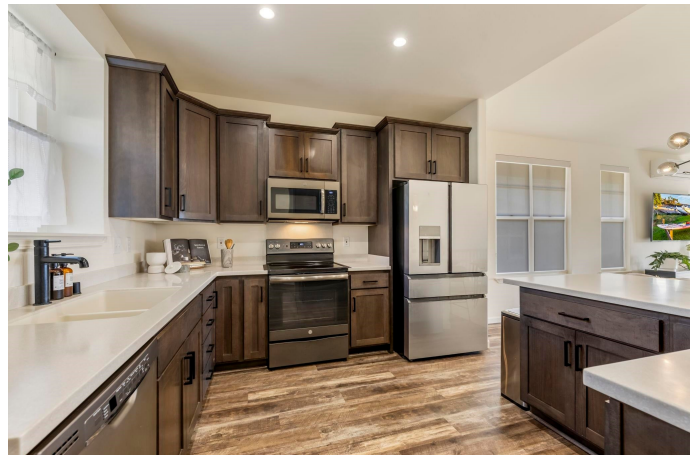
MLS® #401335

\$1,558,000

3 Bedroom, 2.50 Bathroom, 1,928 sqft
Residential on 0 Acres

ILIMA at Kehalani, Wailuku, HI

Welcome to your Maui dream home on the hillside areas of Wailuku! You will fall in love with this 3-bedroom, 2.5-bathroom residence, built in 2019, that combines contemporary design with solar energy power technology. As you step into the entry-level, you'll be greeted by OCEAN AND MOUNTAIN VIEWS from the kitchen, living room, lanai, and primary bedroom. The primary bedroom, complete with an en-suite bathroom (tub and shower) and spacious closet is conveniently located on this level, creating a seamless "single-floor plan" living experience. The thoughtfully designed layout continues downstairs, featuring two additional bedrooms, a full bathroom, a spacious great room, and a laundry room. THE BEST OF SINGLE-FLOOR PLAN LIVING COMBINED WITH 2-STORY HOME BENEFITS. TWO LANAIS (UPSTAIRS AND DOWNSTAIRS). From the downstairs, you can go right out into your backyard. Create a garden in the terraced side yard, and an area to dine and bbq al fresco. This energy-efficient haven boasts PHOTOVOLTAIC SOLAR panels and a TESLA POWERWALL, ensuring not only a reduced environmental footprint but also savings on your electric bill. From the entry-level, there are steps down to the backyard as well. Owners have put in many upgrades to this wonderful property such as driveway extension, Photovoltaic, walkways, outdoor stairs, upgraded flooring, split AC systems, and so much more. Please see or



ask for UPGRADE and IMPROVEMENT list.
This home offers a perfect blend of sophistication and functionality. Nearby is the quaint town of Wailuku with stage theaters, schools, parks, restaurants, shops, medical facilities, etc. Also nearby is the majestic Iao Valley with gorgeous trails, cool streams, Heritage Park, and cultural significance. Within 10-15 minute drive are long sandy beaches. Take this beautiful opportunity to make this property your own and embrace the inspiring Maui Lifestyle. Please see video and also take the 3-D tour.

Built in 2019

Essential Information

MLS® #	401335
Price	\$1,558,000
Bedrooms	3
Bathrooms	2.50
Square Footage	1,928
Acres	0.12
Year Built	2019
Type	Residential
Sub-Type	Single Family Residence
Land Tenure	Fee Simple
Status	Closed

Community Information

Address	172 Puaehu St
Area	Wailuku
Subdivision	ILIMA at Kehalani
City	Wailuku
State	HI
Zip Code	96793

Amenities

Parking	Garage, Garage Door Opener
# of Garages	2

View Mountain/Ocean

Waterfront None

Interior

Interior Features Chandelier/Swag Lamp

Appliances Dishwasher, Disposal, Dryer, Microwave, Range, Refrigerator, Solar Hot Water, Washer

Exterior

Windows Blinds, Drapes

Additional Information

Listed By Maui Real Estate Advisors LLC

Date Listed February 28th, 2024

Days on Market 403

HOA Fees 81

HOA Fees Freq. Monthly

This information is believed to be accurate. It has been provided by sources other than the Realtors Assoc. of Maui and should not be relied upon without independent verification. You should conduct your own investigation and consult with appropriate professionals to determine the accuracy of the information provided and to answer any questions concerning the property and structures located thereon. Featured properties may or may not be listed by the office/agent presenting this brochure. Copyright, 1995-2015, REALTORS® Association of Maui, Inc. All Rights Reserved.